



Transform Education with AI

Discover how KICCPA's suite of AI-powered platforms — LearnX LMS and School Management System — are redefining how institutions teach, manage and grow in the digital age.

POWERING BUSINESSES WITH INTELLIGENT DIGITAL SOLUTIONS



About Us

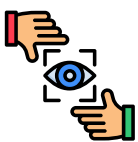
We are a technology-driven company delivering innovative, scalable, and high-performance solutions across education, data, intelligence, and application development.

We empower organizations to modernize systems, enhance learning, and drive growth using AI, Data, and Cloud technologies.



Our Mission

Deliver meaningful technology that creates impact.



Our Vision

Shape a smarter, more connected future with AI.



Our Values

Innovation, integrity, collaboration, and customer success.

Why Us?

Purpose-built for education — designed with educators, administrators, and parents to ensure seamless adoption, immediate impact, and measurable ROI.



A COMPLETE SUITE OF INTELLIGENT SOLUTIONS

ABOUT US

KICCPA's **AI ecosystem** spans the full educational lifecycle – from a student's first enrollment to alumni engagement – all connected through a unified intelligence layer.



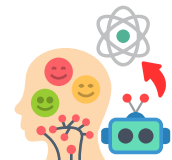
AI-POWERED ACADEMIC INTELLIGENCE

Automates evaluation with OCR correction, MCQ grading, and personalised learning insights.



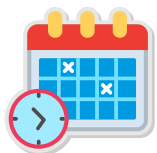
PREDICTIVE ANALYTICS ENGINE

Identifies weak areas, predicts performance, and flags risks early.



AI BEHAVIOR & EMOTION TRACKING

Analyzes student behaviour patterns to enable early intervention and support.



SMART TIMETABLE GENERATOR

Creates conflict-free, AI-optimized schedules in seconds with balanced workloads.



AI CONTENT GENERATION

Auto-generates reports, question papers, worksheets, and summaries.



ADMIN & WORKFLOW AUTOMATION

Automates operations with integrated workflows, multi-campus management, and system integrations.



PTM Meeting
18 May, 10:00 AM

Science Fair
25 May

Holiday
27 May

AI

Learning Strengths

- Problem Solving: Excellent
- Concept Clarity: Strong
- Participation: Very Good

New Assignment
Math Worksheet
Due: 20 May

AI Insight

Your child shows excellent improvement in Mathematics. Keep encouraging consistent practice!



Good Evening, Parent

Overall Performance: **A+** Excellent

Attendance: **94%** This Month

Assignments: **8/10** Completed

Upcoming Events: **3** This Week

Performance Overview: [Line graph showing upward trend]

Subject Wise Performance: **A+**

- Mathematics
- Science
- English
- Studies



Topics

- 01 Introduction
- 02 Key Concepts
- 03 Examples
- 04 Practice
- 05 Summary

The Smartest Way to Teach, Learn, and Scale Education

An AI-powered Learning Management System designed to deliver measurable student outcomes while reducing teacher workload.



What is LearnX?

LearnX is a cloud-based LMS that combines content delivery, AI-driven insights, and performance tracking into one unified platform — built for schools, coaching institutes, and academic programs.

Key Value Proposition

- Improve student performance with AI insights
- Reduce teacher workload through automation
- Track learning outcomes in real time
- Access anytime, anywhere (mobile-first)

Why Choose LearnX?

- Built specifically for education (not generic software)
- AI integrated at every level
- Combines LMS + analytics + engagement
- Scales from small institutes to large institutions



AI That Works With Educators – Not Against Them

CORE FEATURES

Smart Learning Experience

- Live classes + recorded lectures
- Interactive tools (polls, Q&A, attendance tracking)

AI Mentor

- In-video doubt solving
- Context-aware instant responses

Assessments & Testing

- MCQs + descriptive tests
- Auto-evaluation with instant feedback

Engagement System

- Gamification (badges, XP, leaderboards)
- Boosts student consistency

Parent + Student Value

- Real-time performance tracking
- Attendance & progress updates
- Instant communication

Student Experience

- Personalized learning paths
- AI-driven study recommendations
- Anytime content access

Platform Advantages

- Fully cloud-based
- Mobile + desktop access
- Secure & scalable
- Role-based dashboards



SCHOOL MANAGEMENT SYSTEM

One Intelligent Platform for Complete School Management

Core Capabilities

Academic Management

End-to-end control over student records, attendance, exams, and performance tracking.

Financial Systems

Digital fee collection, automated reminders, and real-time financial visibility.

Communication Hub

Instant notifications, announcements, and updates delivered directly to parents.

Smart Scheduling

Dynamic timetables and academic calendars, automatically optimised.

CHOOSE THE RIGHT PLAN FOR YOUR INSTITUTION

Flexible packages designed to scale

★ MOST POPULAR



STANDARD DIGITAL FOUNDATION

A complete entry point into structured, AI-supported digital learning.

- ✓ Core LMS & dashboards
- ✓ Mobile + web access
- ✓ Multilingual support
- ✓ AI recommendations & chatbot
- ✓ Automated grading



Ideal for institutions starting their digital transformation.





Choose Standard



PREMIUM

Deeper intelligence, stronger outcomes, and data-driven decision making.

EVERYTHING IN STANDARD, PLUS:

- ✓  AI-generated academic content
- ✓  Personalised learning pathways
- ✓  Real-time analytics dashboards
- ✓  Predictive AI performance insights



BEST VALUE FOR GROWING INSTITUTIONS

Designed to improve outcomes, engagement, and strategic decisions.

Choose Premium



ENTERPRISE FULL AI ECOSYSTEM

Best for: Large schools, chains, and high-growth institutions.

EVERYTHING IN PREMIUM, PLUS:

- ✓  Revenue & enrollment forecasting
- ✓  Full ERP + CRM integration
- ✓  Risk alerts & workflow automation



Built for scale, complexity, and complete institutional transformation.

Choose Enterprise

ONE PLATFORM. EVERY FUNCTION. POWERED *BY* *AI.*

- Intelligent Evaluation
- Predictive Insights
- Automated Content & Reporting



- Administrators gain full control and visibility
- Teachers save time and focus on teaching
- Parents stay informed and engaged
- Students receive personalised learning support

Why It Stands Out

- *Built specifically for education ecosystems*
- *Combines LMS, ERP, and AI intelligence in one platform*
- *Scales effortlessly across institutions and campuses*
- *Designed for real-world adoption, not complexity*

Complete Feature Overview

WHERE AI MEETS THE FUTURE OF EDUCATION.

ACADEMIC & STUDENT SYSTEMS



Student Information Management



Attendance Management



Academic Management



Examination & Results System



Report Cards & PTM Management

STAFF & ADMINISTRATION



Staff & Teacher Management



Admin & Automation Engine



Document Management System



Security & Compliance

FINANCE & OPERATIONS



Fees & Financial Management



Canteen Management System



Transport & Bus Tracking



Hostel Management

AI & INTELLIGENCE



AI-Powered Academic Intelligence



Student Progress & Analytics Dashboard



AI Behavior & Emotion Tracking



Smart Timetable Generator (AI)

ENGAGEMENT & EXPERIENCE



Communication & Notification System



Event & Calendar Management



Extracurricular & Activity Management



Cultural Program Management



Parent Engagement Score



Mobile App



Health & Wellness Tracking



Alumni Network



KICCPA

A COMPLETE ECOSYSTEM FOR MODERN EDUCATION — POWERED BY INTELLIGENCE. SIMPLIFYING OPERATIONS WHILE IMPROVING ACADEMIC OUTCOMES AT SCALE.

CONTACT US

📞 Dr. Daoud chit : +965 6091 9345
Syam : +965 6078 0180

✉️ daoud@kiccpa.com
ram@kiccpa.com
marketing.gcc@kiccpa.com

📍 **Head Office:**
Floor 2&6, Al Barsha Complex, Tunis Street, Hawally, Kuwait.